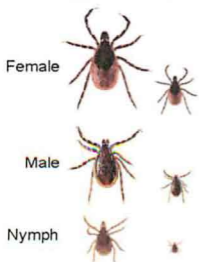


COMMON TICK SPECIES IN NEW JERSEY

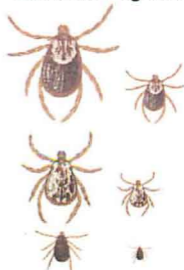
Blacklegged (Deer) Tick



Lone Star Tick



American Dog Tick



Ticks to the left enlarged to show detail. Ticks to the right represent actual size.

KEY POINTS TO REMEMBER

- ◆ Prompt removal of attached ticks greatly reduces the likelihood of disease transmission.
- ◆ While only the black-legged tick can transmit Lyme disease, all three ticks can transmit disease.
- ◆ See your health care provider if you develop symptoms (such as fever, rash, or muscle aches) after any tick bite.
- ◆ Personal precautions (wearing pants, using repellents, etc.) provide the best protection against tick-borne disease.

MONMOUTH COUNTY MOSQUITO CONTROL DIVISION

1901 Wayside Rd., Tinton Falls NJ 07724

Phone: 732-542-3630 Email: ticks@co.monmouth.nj.us

For more information visit: visitmonmouth.com/mosquito

